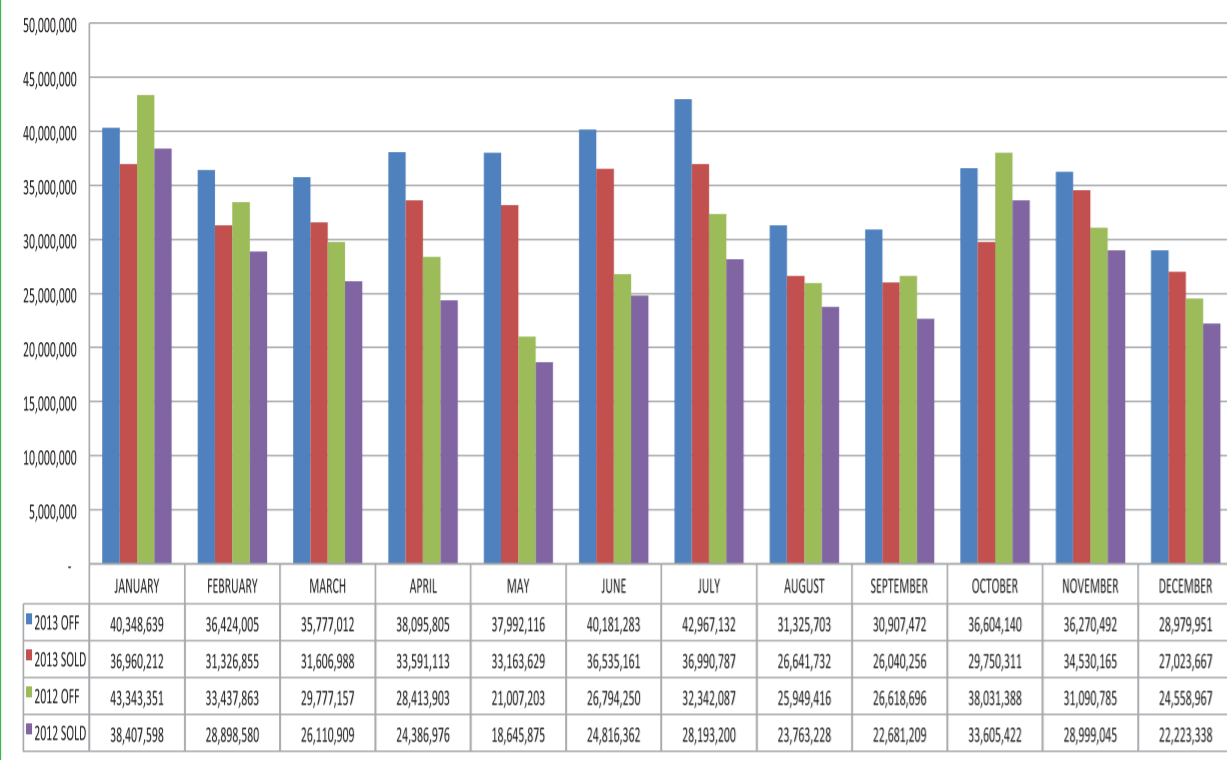


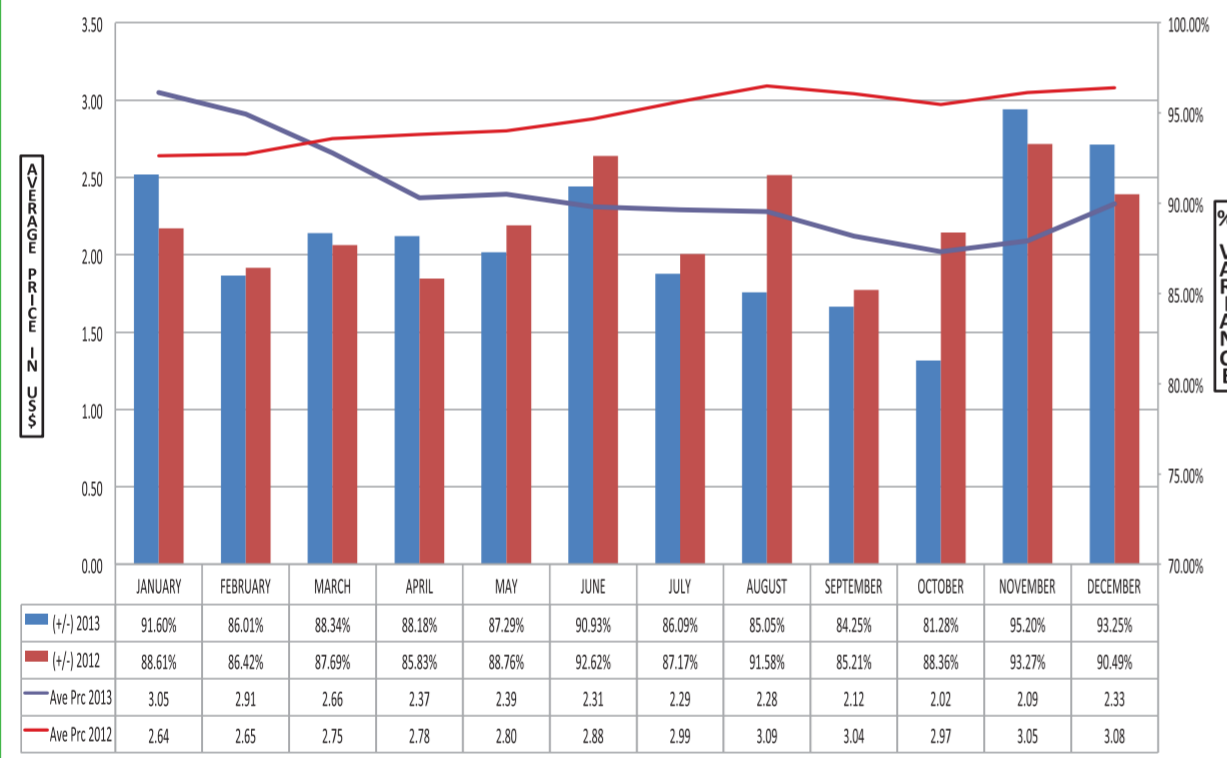
Africa Tea Brokers Limited

Tea Chart 2013

MOMBASA AUCTION KILOS OFFERED AND SOLD 2012 - 2013



MOMBASA AUCTION % VARIANCE OVER SALE AVERAGES 2012-2013



MOMBASA AUCTION TOP NINE BUYERS PURCHASES COMPARISON 2012 / 2013

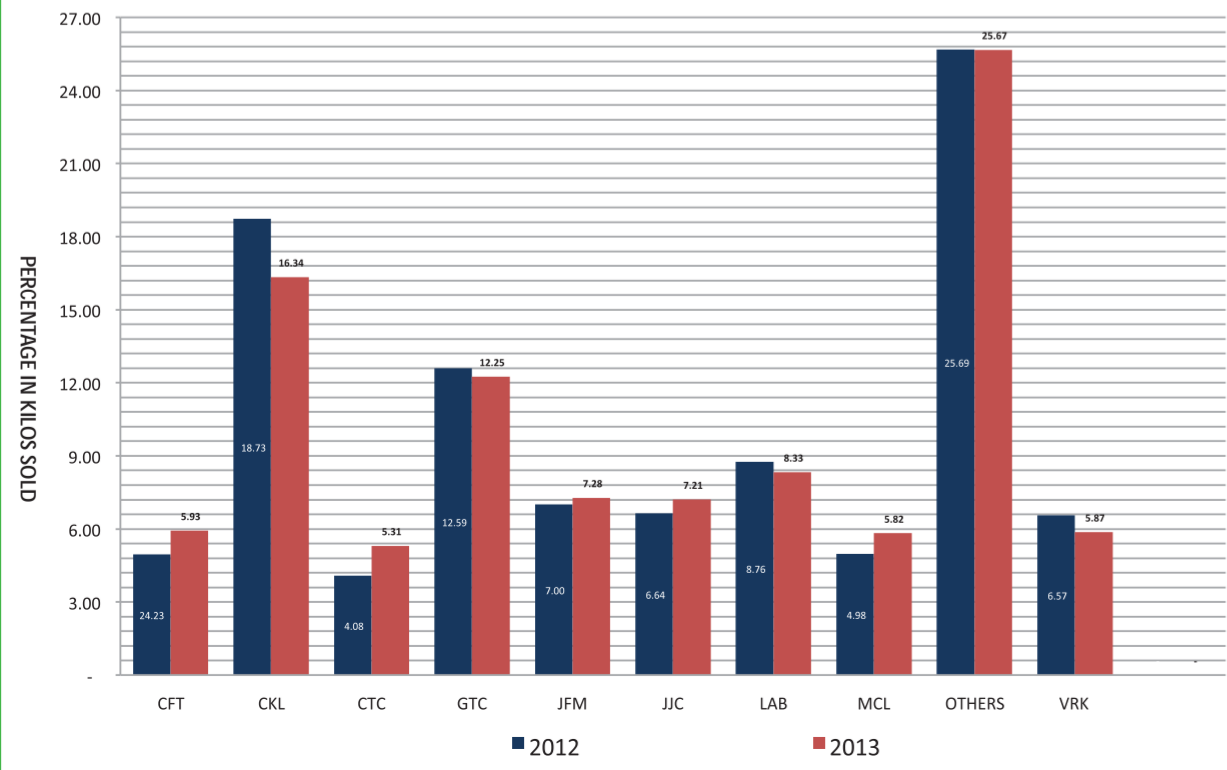


Table 1. MOMBASA AUCTION AVERAGE PRICES PER COUNTRY

| Country | 2011 (US\$/Kgs) | 2012 (US\$/Kgs) | 2013 (US\$/Kgs) |
|--------------|-----------------|-----------------|-----------------|
| Kenya | 2.98 | 3.18 | 2.64 |
| Uganda | 1.76 | 1.87 | 1.83 |
| Rwanda | 2.73 | 2.87 | 2.58 |
| Burundi | 2.77 | 2.99 | 2.39 |
| Tanzania | 1.38 | 1.46 | 1.68 |
| DRC | 1.88 | 1.89 | 1.90 |
| Madagascar | 1.99 | 1.82 | 1.85 |
| Malawi | 1.25 | 1.15 | 1.70 |
| Mozambique | 1.16 | 1.09 | 1.50 |
| TOTAL | 2.72 | 2.88 | 2.41 |

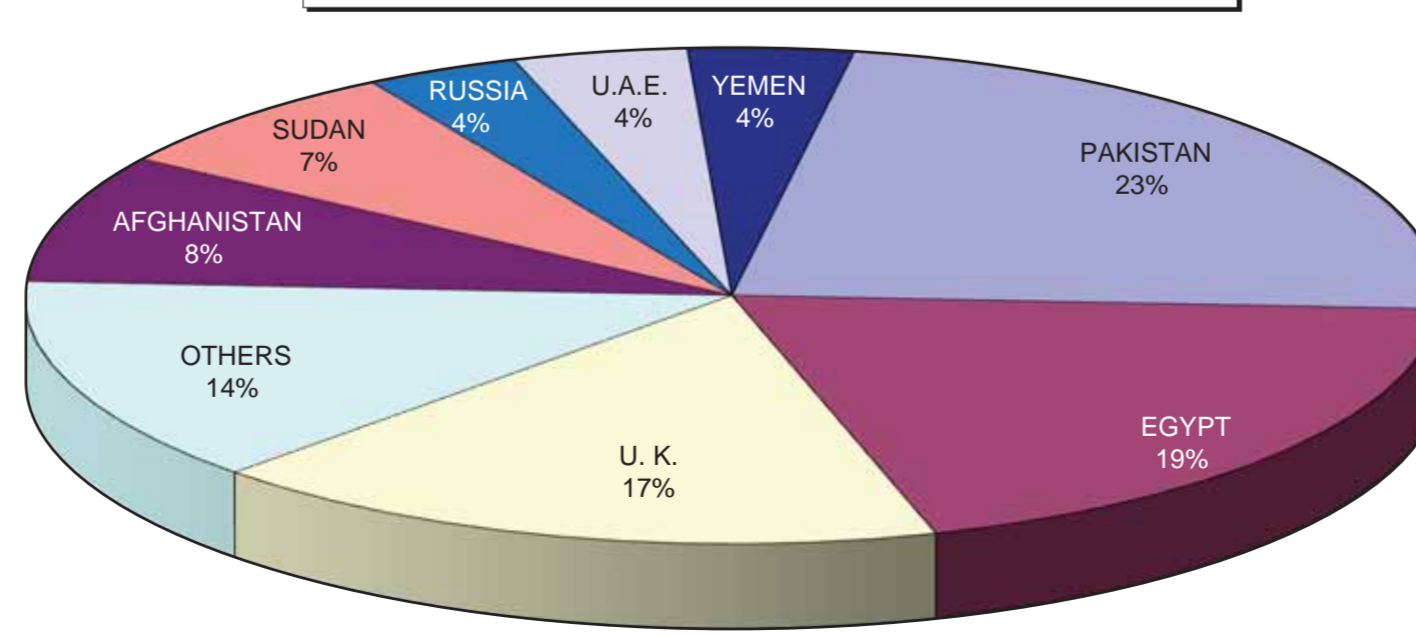
Table 2. MOMBASA AUCTION OFFERINGS PER COUNTRY

| Country | 2011 ('000)kgs | 2012 ('000)kgs | 2013 ('000)kgs |
|--------------|-------------------|-------------------|-------------------|
| Kenya | 281,957.00 | 259,693.00 | 332,286.00 |
| Uganda | 60,514.00 | 57,958.00 | 63,113.00 |
| Rwanda | 20,885.00 | 18,830.00 | 19,177.00 |
| Burundi | 8,540.00 | 9,293.00 | 9,734.00 |
| Tanzania | 12,368.00 | 10,106.00 | 8,077.00 |
| DRC | 416.00 | 299.00 | 269.00 |
| Madagascar | 294.00 | 243.00 | 177.00 |
| Malawi | 3,777.00 | 2,203.00 | 304.00 |
| Mozambique | 2,645.00 | 2,743.00 | 2,736.00 |
| TOTAL | 391,396.00 | 361,368.00 | 435,873.00 |

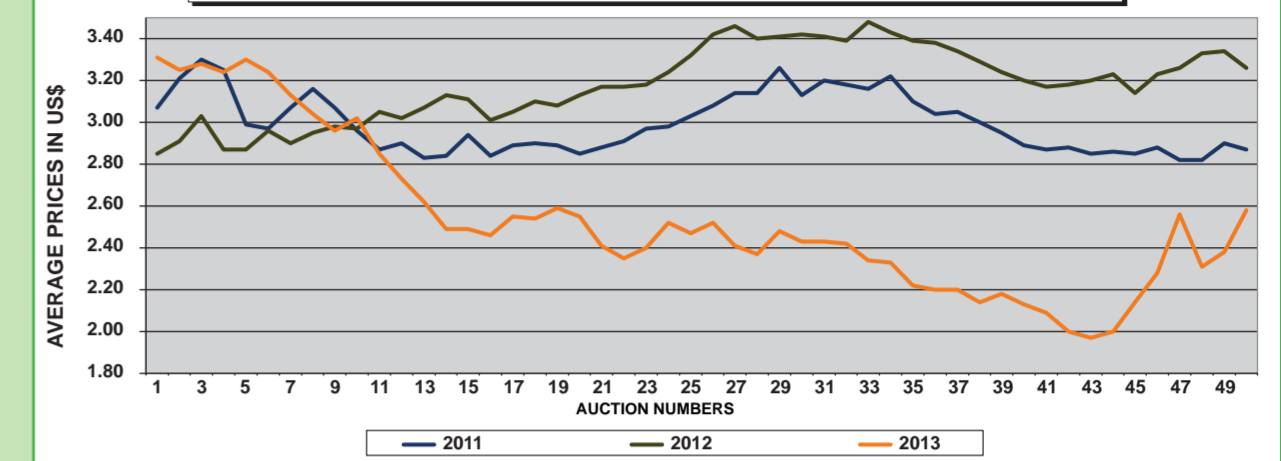
Table 3. WORLD TEA PRODUCTION (Metric Tonnes Rounded)

| Country | 2010 ('000)kgs | 2011 ('000)kgs | 2012 ('000)kgs |
|--------------|---------------------|---------------------|---------------------|
| India | 966,403.00 | 1,115,720.00 | 1,126,330.00 |
| Bangladesh | 61,620.00 | 59,320.00 | 62,155.00 |
| Sri Lanka | 331,427.00 | 328,632.00 | 328,397.00 |
| Indonesia | 151,012.00 | 142,342.00 | 137,245.00 |
| China | 1,475,060.00 | 1,623,214.00 | 1,789,753.00 |
| Vietnam | 175,000.00 | 178,000.00 | 190,000.00 |
| Kenya | 399,006.00 | 377,912.00 | 369,562.00 |
| Uganda | 59,140.00 | 54,178.00 | 57,939.00 |
| Tanzania | 31,646.00 | 32,775.00 | 32,282.00 |
| Burundi | 6,800.00 | 7,000.00 | 8,700.00 |
| Rwanda | 23,249.00 | 24,067.00 | 24,700.00 |
| Malawi | 51,591.00 | 47,056.00 | 42,490.00 |
| Zimbabwe | 14,293.00 | 14,622.00 | 13,000.00 |
| Others | 454,112.00 | 448,636.00 | 442,072.00 |
| TOTAL | 4,200,359.00 | 4,453,474.00 | 4,624,625.00 |

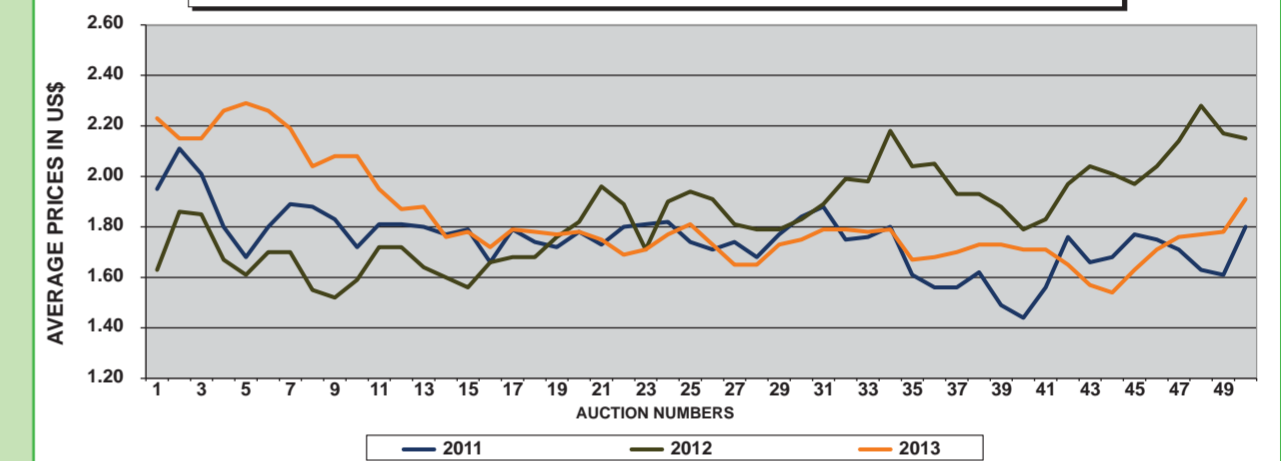
JAN - DEC 2013 TEA EXPORTS FROM MOMBASA



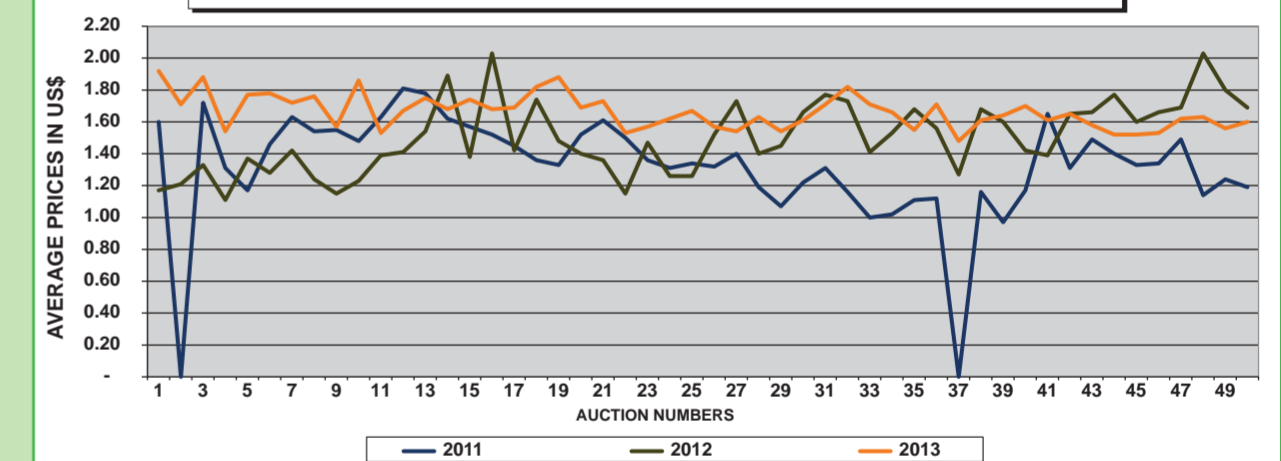
KENYA WEEKLY AVERAGE PRICES FROM 2011 - 2013



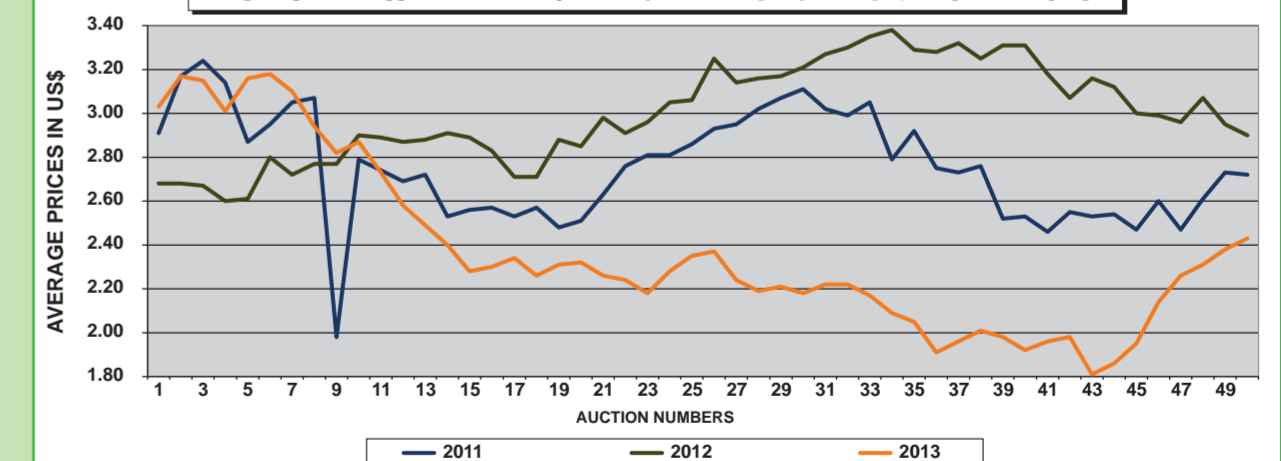
UGANDA WEEKLY AVERAGE PRICES FROM 2011 - 2013



TANZANIA WEEKLY AVERAGE PRICES FROM 2011 - 2013



BURUNDI WEEKLY AVERAGE PRICES FROM 2011 - 2013



RWANDA WEEKLY AVERAGE PRICES FROM 2011 - 2013

